

T-ISS RELEASE HOOK

30kN - PX01-B

MANUAL RELEASE HOOK FOR RESCUE BOATS



T-ISS – PX01-B Manual release hook 30 kN, for lifeboats and rescue boats
T-ISS Storkstraat 1-3, 2722NN Zoetermeer, The Netherlands

+31 (0)315 - 656060
sales@t-iss.com www.t-iss.com

Index

1. THE T-ISS PX01-B RELEASE HOOK	PAGE 2.
2. INSTALLATION & MAINTENANCE RECORDS	PAGE 3.
3. SAFETY INSTRUCTION	PAGE 4.
4. TECHNICAL SPECIFICATIONS	PAGE 5.
5. INSTALLATION & OPERATING GUIDE	PAGE 6.
6. INSTRUCTION FOR MAINTENANCE	PAGE 8.
7. DIAGRAM AND SPARE PART LIST	PAGE 9.

I. THE T-ISS PX01-B RELEASE HOOK

The PX01-B release hook meets the high SOLAS standards for off-load release hooks, as described in the MSC.81(70) and applicable LSA code and is dimensioned to suspend davit launched rescue boat with a davit load not exceeding 30kN, 3.000 kg.

For your information:

- Use non-rotating wire rope.
- Use a painter line where possible.
- Use a shackle \varnothing 19 mm up to \varnothing 27 mm.

During installation of the hook, only the top shaft should be disassembled. Full disassembly of the hook can cause unreparable damage to the system and dangerous situations which can lead to injuries or death of personnel.



2. INSTALLATION AND MAINTENANCE RECORDS

Hooktype.....
Serialnumber

Installation date			The 5 year life cycle starts after this date			
Monthly inspections year 1.	Date	Approve	Date	Approve	Date	Approve
Monthly inspections year 2.						
Monthly inspections year 3.						
Monthly inspections year 4.						
Monthly inspections year 5.						

The hook now needs to be replaced after 5 years or overhauled by an authorized provider, please contact us at sales@t-iss.com for authorized providers.

3. SAFETY INSTRUCTION

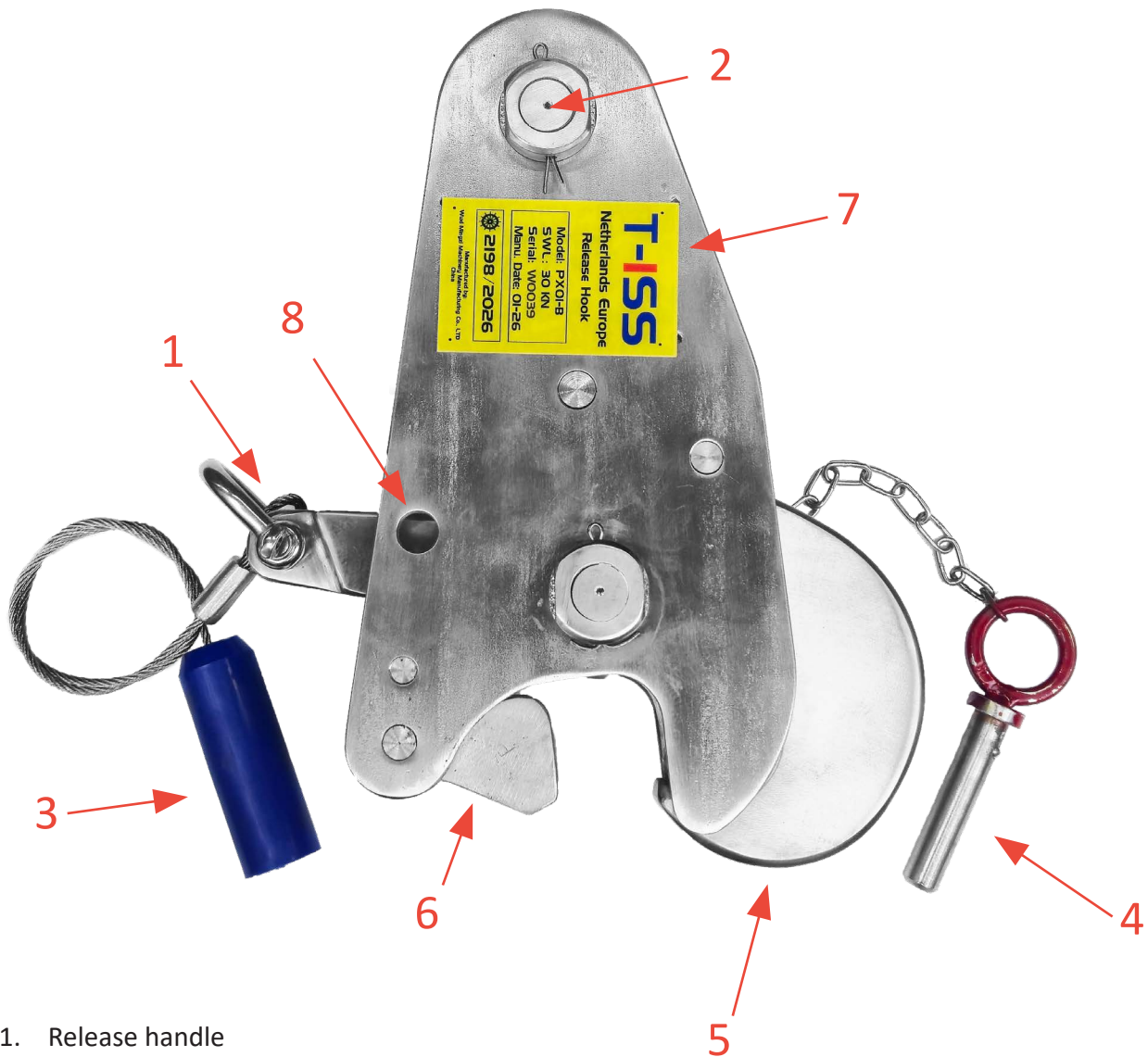
For your safety, please carefully read the instruction before using the release hook to prevent improper operation and to ensure your personal safety.

For a safe operation, all operators and persons involved in installation, maintenance and operation of the PX01-B release hook must familiarize themselves with this instruction manual to ensure they are familiar with the system functions and know how to use them. The hook should only be operated by persons who understand the functionalities and routines.

We advise to make this manual easily available on board for personnel working with the PX01-B release hook.

- Make sure that the operator understands the functionality of this release system completely to ensure it can be operated safely.
- Always start with the lever in the upward position and locked by the safety pin.
- Always check that the hook is in good shape before commencing a drill.
- If any hazardous condition is found, this needs to be reported immediately and the hook must be put out of operation.
- For maintenance and overhaul only original spare parts should be used.
- For maintenance and overhaul always use appropriate tools.

4. TECHNICAL SPECIFICATIONS



1. Release handle
2. Pin and roller
3. Cord with blue handle for manual release
4. Safety pin
5. Lifting hook
6. Latch
7. Type plate
8. Hole for safety pin

The PX01-B manual release hook is intended to be used on rescue boats. Manufactured in seawater resistant stainless steel it is designed as an integrated manual release hook. Pushing the release handle to the downward position releases the rescue boat. The safe working load of the PX01-B is 3000kg.

5. INSTALLATION & OPERATING GUIDE

Installation

Installation of the hook is easy, disassemble the top shaft by removing the hexagonal securing screw, and unscrewing the nut which holds the shaft in position. Place the spliced eye or corresponding wire rope fall over the distance bush. Place the distance bush between the two side plates and place the shaft. Then make sure the shaft is fastened tightly and the hexagonal securing screw is put back in place.

Operation

The 30kN is a manual release hook. All hook handling can be done by one person. The hook is designed to be opened manually, just push the release handle in the downward position and the hook will open after removing the safety pin.

Pull the handle, insert the steel wire rope or chain link into the hook, insert the safety pin, and the rescue boat can be lowered.

When the rescue boat is on the water and the hook is in an unloaded state, remove the safety pin from the hole, push the release handle to the downward position, and the hook will release the wire rope or the chain link.

Maintenance and inspection

First inspection must be done directly after installation and before first use.

It is important and necessary to follow the maintenance schedule and instruction for maintenance.

The hook needs to be replaced after 5 years or overhauled by an authorized provider, please contact T-ISS. Email us via sales@t-iss.com

When maintaining the 30kN release hook, only original parts can be used. All the parts can be obtained from T-ISS. Email us via sales@t-iss.com

6. INSTRUCTION FOR MAINTENANCE

This release hook requires frequent maintenance to ensure good working order in all conditions.

Preventive maintenance can be done by any of the crew members and consists of:

- Keeping the hook clean, by cleaning with regular soap and water.
- Keeping all moving parts lubricated.
- Check for, and adjustment of, wear and tear parts.

Always check the bow-shackle before use and make sure the tightening bolt are fit tightly.
 If the release hook will not be used for a longer period, please store it in the released position.

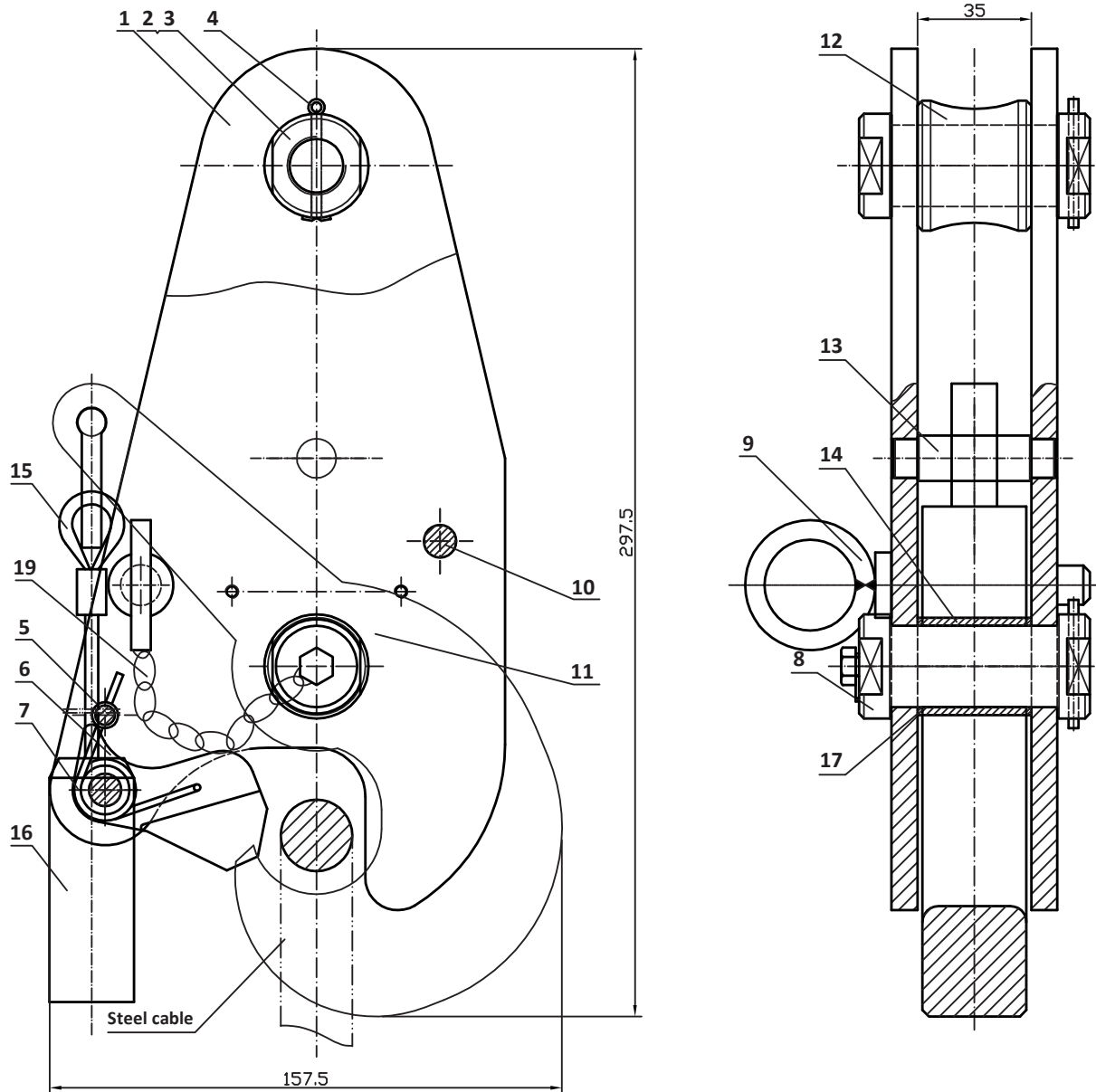
Maintenance regulations

Below points must be followed to ensure the hook and its operation is in compliance with the regulations:

- Certificates, inspection and maintenance records must be kept and be available on-board.
- Replacement of parts must be carried out in accordance with the manufacturer's requirements and standards.
- Maintenance time schedule as per below must be followed.
- The hook should only be disassemble/assembled by an authorized person.

	Weekly	Monthly	5-yearly
Clean and visual inspection, check for defaults.	X		
Lubricate moving parts.		X	
Check connection of wire rope to the hook.		X	
Check release cords (replace with original spare part, if damaged).		X	
Check automatic release function.		X	
Replace or overhaul the hook			X

6. DIAGRAM AND SPARE PART LIST



Technical requirements

- After the release hook is assembled, all parts should be flexible and without any jamming
- When assembling, apply marine grease (ZU45-1) to all moving parts.
- SWL:30KN 2.5 times static loading test :7500kg 6 times breaking test :18000kg

Only use original spare parts when maintaining the PX01-B release hook. All spare parts are available from T-ISS.

Part No.:	Part Code.:	Description:	Quantity:
1	300NY-01	Left and right side plates	1 Each for one
2	300NY-02	Axis pin	1
3	300NY-03	Screw nut	2
4	GB91-76	Cotter pin Ø3*45	2
5	300NY-04	Catch spring axis pin	1
6	300NY-05	Baffle	1
7	300NY-06	Dual torsion spring	1
8	300NY-07	Axis pin	1
9	300NY-08	Safety pin	1
10	300NY-09	Fitting pin axis	2
11	300NY-10	Combined unit of lifting hook and handle	1
12	300NY-11	Roll	1
13	300NY-12	Handle axis	1
14	300NY-13	Copper sheathing	1
15	300NY-14	Handling steel wire rope	2
16	300NY-15	Handle	1
17	GB96-76	Spacer Ø25	2
18	300NY-16	Label	1
19		Chain	1